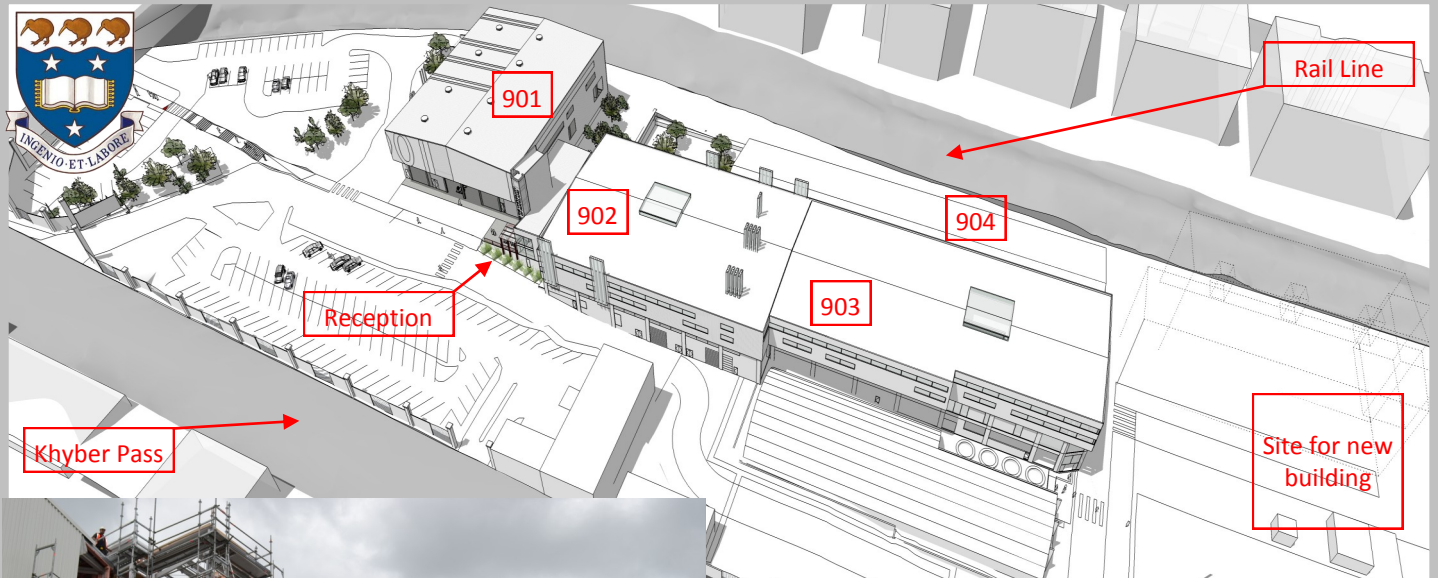


Steel Used in Refurbishing U of A Newmarket Campus



Pictured above, the link between 901 and 902 looking towards Broadway. Below a raised skylight in 903 illuminates existing castellated beams that have been preserved. Right, strengthening the walls of 904 with steel columns and bracing.



The refurbishing of four former Lion Breweries buildings on Khyber Pass will provide new research facilities for post-graduate engineering students. The principal laboratories will be: Aerodynamics, Thermofluids and Formula SAE for the Mechanical Engineering Department. "It's been necessary for our riggers to be extremely flexible," says Site Manager Kevin Deane, "to accommodate the follow-on trades. D&H will have installed a total of 450 tonnes of structural steel by the time the refurbishment is completed in July this year."



"We stripped 901 and did the steelwork for a raised, pitched roof, plant platforms, flue towers, a mezzanine floor and hanging steel for pipework and services. In 902 we made and fitted pop-up skylights, more flue towers and more hanging steel, and in 903 we also fitted a large water tank weighing nine tonnes. In 904 we fitted columns to strengthen the building's seismic resistance, and we installed new end-walls. We also made sure that the gantry crane will fit its girders. It's been very complicated and logistically very challenging, but that's what makes us D&H Steel."

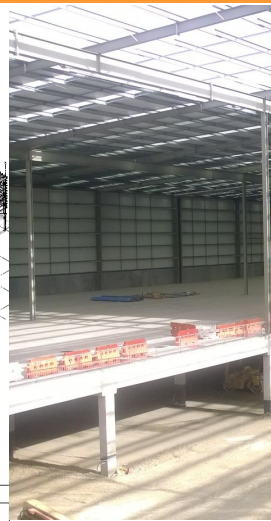
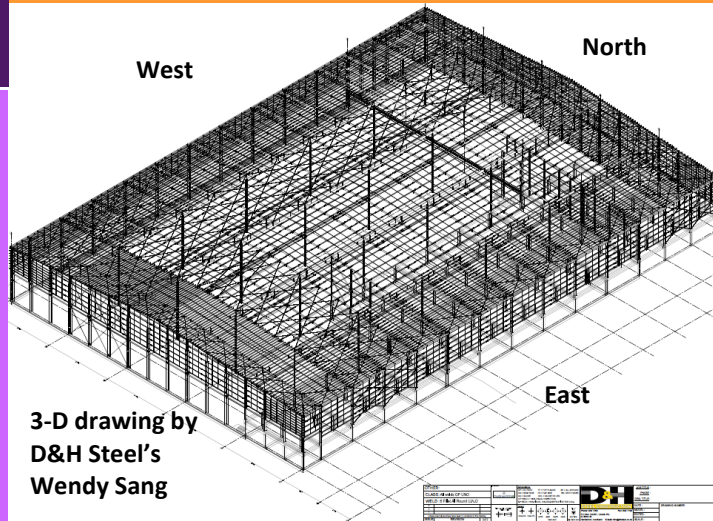
The university's Property Services Director, Peter Fehl, says \$57-million will be spent on these buildings.

Also in this issue: Farmers state-of-the-art national distribution centre at Ormiston . . . High praise for D&H riggers . . . Hub Hornby becomes a Christchurch growth-point . . . Buckling-Restrained Braces give new life in Christchurch . . . Health & Safety suggestions get Board support . . . Three trainees start apprenticeships . . . Accounting for steel in a four-building project.

'We will maintain the highest possible "in stock" position with regard to core merchandise.'

David Norman
Group Managing Director

- one of the key objectives of the company's Mission Statement.



"Operating as we do on both sides of the Tasman," says David Norman, "we are confident about our place in both economies, though it has to be said that New Zealand is currently in a better space than Australia, thanks to our agricultural strength and relatively low dependence on commodity exports. The extension being completed at Laidlaw Way, off Ormiston Road in Auckland, will equip Farmers with a state-of-the-art national distribution centre that will enable us to provide maximum value for our customer's dollar."

Richard Horner, CAD Manager and Associate at Tse Architects, says the total length of the existing building plus the extension is 426.3m with a uniform width of 133.5m. "Including the mezzanine floor, container unloading, the photo studio and document storage plus the employee car parking, the floor space totals 45,800m². Essentially, Farmers are managing the project themselves. The Group Managing Director, David Norman, is on site at least two days a week."

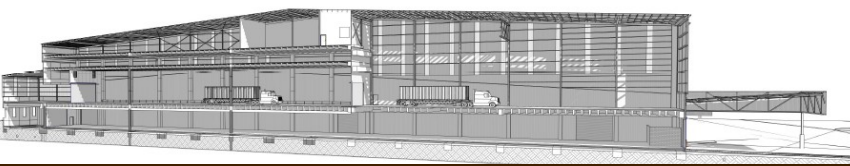
The bulk of the Inward Goods and Despatch will be made through roller shutter doors at ground level along the East side of the building. A canopy covers the full width of the yard. On the West side there is a ramp up to the mezzanine floor. Trucks delivering goods to

this level are unloaded by forklift and the goods taken directly to the mezzanine racking; this avoids the double-handling that would be needed if the vehicles were de-vanned on the ground floor. The ramp is also used by vehicles accessing the employee car-parking levels.

"The sheer volume of products is off the chart," says David Norman. "So the scale of the building that has its roof apex at 26m can sometimes be under-estimated. It's all very well to see five levels of car-parking sitting under the roof, but the D&H Steel riggers who erect the steel are a special bunch. They're led by Eric Birch, their Rigging Supervisor, who's tough but fair. He leads by example and lends his men a hand when needed. You can see that they really know what they are doing, and it translates into safe erection, no mistakes, staying on programme and making the budget targets. Eric knows how to build a spirit of co-operation. I hold him and his men in high regard."

On this project they will have erected 950 tonnes of steel fabricated at the D&H Steel plant in Henderson. What

1. A view of the south end of the extension with the apex at 26m scale.
2. To the north, the five levels of the employee car park, which sit under the roof.
3. D&H riggers aloft, bolting up roofing steel after a crane lift.
4. Rigging Supervisor Eric Birch (third from right). On his left is his right-hand-man, Mark Liahona Ahchee and, in the yellow visi-vest Shepherd Wilson.
5. David Norman (right) talks to Eric Birch up on level 5 of the car park.



Graphic provided by Richard Horner, Tse Architects, shows trucks on the mezzanine floor

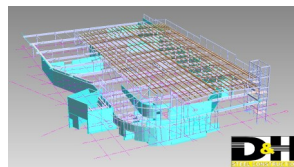
The Hub Hornby Shopping Centre Steps Out In Christchurch

The Hornby Hub was a popular regional centre at the time that quakes struck Eastgate. Thanks to Shopping Centre Investments (SCI) and the arrival of Farmers, Hub Hornby is about to take its place as the fourth largest shopping centre in Christchurch.

SCI's Project Manager Andy Wilkinson says the project has run well since the design was finalised following Farmers' move to double in size in Hub Hornby by adding a second level. "Bringing D&H Steel on board was a good move," says Andy, "starting with their detailing



team of Wayne Peachy and Guy Jamison. Their drawings were excellent and their Custom Welded Beams helped reduce costs. Local company John Jones Steel speaks the same language as D&H and fabricated the lift shaft and the perimeter steel on the ramp. All the steel erected by disruption to In fact, I'd tenants were glad to see their buildings go up with more steel than concrete, given steel's good seismic performance in the Christchurch quakes."



The Farmers decision increased its floor area from and is one of the main factors contributing to the rapid growth that Hub Hornby is expecting.



Aerial photograph of the main contractor's site.

National Distribution Centre



1



2

What makes a good steel rigger? Eric Birch: "Some say you have to be relatively fearless, but that's not quite right. Others say you just have to be born with a head for heights. Well, some folks are, in the sense that they can stand right on the edge of a cliff and look down without flinching. But even that's not all you need. A good steel rigger has to be able to function at heights. Often in the old days riggers used to walk across steel beams as if they were footpaths. These days we'd regard that as reckless and in breach of our Health & Safety rules. But even when he's wearing his safety gear and is properly hooked up to ensure that if he slips his fall will be arrested, a rigger still has to cope with movement at height. Sometimes wind can cause a hoisted beam to rotate and the rigger must drive his boom lift towards the beam and rope it into position for bolting. Some men just can't function at height and cling to the cradle. Those that *can* function become satisfied riggers."



3

... and the vehicles showing the
... starts at the mezzanine level.



5

... son, 18 year old Bobbie, stand-
... Lewis, while next to him are
... park.



4

... to add a second level
... n 3,000m² to 6,000m²



... graph provided by the
... or, Leighs Construction

Buckling-Restrained Braces give new lease of life

Damaged by earthquakes, 104 Victoria Street in Christchurch was stripped to its shell and refurbished to comply with current New Zealand structural requirements. The owner/developers, Countrywide Property Group, commissioned DHC Consulting Ltd to design new bracing. DHC director Gordan Brkic opted to use Buckling-Restrained Braces (BRBs) at the front and back of the building. "It was a cost effective yet elegant solution that was easy to install. D&H Steel is the New Zealand agent for this brand of BRBs, which have been supplied by the Star Seismic company in Utah. D&H Steel is now manufacturing the Star Seismic BRBs under licence, making them more readily available in New Zealand."





‘Experience Our Strength’

Project Management
3-D & Shop Drawings
Fabrication
Protective Coatings
Site Management & Erection
Innovation

D&H Steel Construction Ltd, 42 Brick St, Henderson 0610, Waitakere, NZ
PO Box 104257, Lincoln Road, Henderson 0654, Waitakere, NZ
Ph: 09 839 7250
Fax: 09 836 7169
www.dhsteel.co.nz

Key D&H People:

- Mike Sullivan**
Managing Director
- Wayne Carson**
General Manager
- Dean Pouwhare**
Operations Manager
- Rob Purchase**
Workshop Supervisor
- Mike Thompson**
Detailing Manager
- Colin Ross**
Project Manager
- John Frederickson**
Custom Welded Beams
- Jamie Moxon**
Estimator
- Adele Hikuroa**
Accounts
- Kevin Thomas**
Procurement Officer
- Megan Aitken**
Document Controller

For enquiries, call 09 839 7250
Pricing
Jamie— ext. 215
Custom Welded Beams
John—ext. 219
Metalwork
Colin—ext. 237
General
Wayne—ext. 205

All Smiles for Health & Safety

Fabricator/Welder Abhishek Naidu collected accolades and \$100.00 in cash when he made D&H Steel history as the first winner of the company’s Health & Safety Suggestions Scheme. A total of seven suggestions were submitted by staff but Abhishek’s was the winner because it will have the greatest impact on the health and safety of his fellow workers. His suggestion was that a reverse alarm and hazard lights be fitted to the D&H forklift; it was immediately implemented.



Left to right: Mike Sullivan, Managing Director; Rowan Chapman, Board Member; Max Pearson, Board Member, Nick Calavrias, Chairman of the Board of Directors, Abhishek Naidu, Fabricator/Welder, and Wayne Carson, Director & General Manager D&H Steel Construction.

The Members of the Board will make the award every three months. “It’s a

mark of the company’s commitment to Health & Safety that its Board devotes time and energy to the running of the scheme,” says General Manager Wayne Carson. “Our people truly are the company’s greatest asset.”



Workshop Supervisor Rob Purchase welcomes Trainees

Having successfully completed their three-month trial period, these three young men will start their apprenticeships as Fabricator/welders once they have been registered by Competenz. Left to right they are: Jin-seok Kim, Chad Ray and Franz De Graff. They will probably have nicknames before completing their time. Rob told them they’d better pass all their papers , *or else!*

Site Manager Liaison with QS

With four large buildings being refurbished at the University of Auckland’s Newmarket campus, it would be easy to lose track of steel that’s been erected, especially when the site is constantly changing and steelwork is sometimes covered as soon as it’s been done. “Experience has taught us that it’s best to fix the monitoring responsibility on the right person for the job,” says Site Manager Kevin Deane. “We appointed Tejinder “Happy” Kumar for this role; as one of our Quantity Surveyors, he comes on site at regular intervals to survey all that we’ve done since his last inspection. The work sequence is often quite different to what happens on a ‘green-field’ site, because we have to be ready to stop what we’re doing in order to switch to another building and erect steel so that electricians, plumbers, chippies and painters can follow on while we return to our job. Happy makes sure we bring everything to account in our invoices.”

