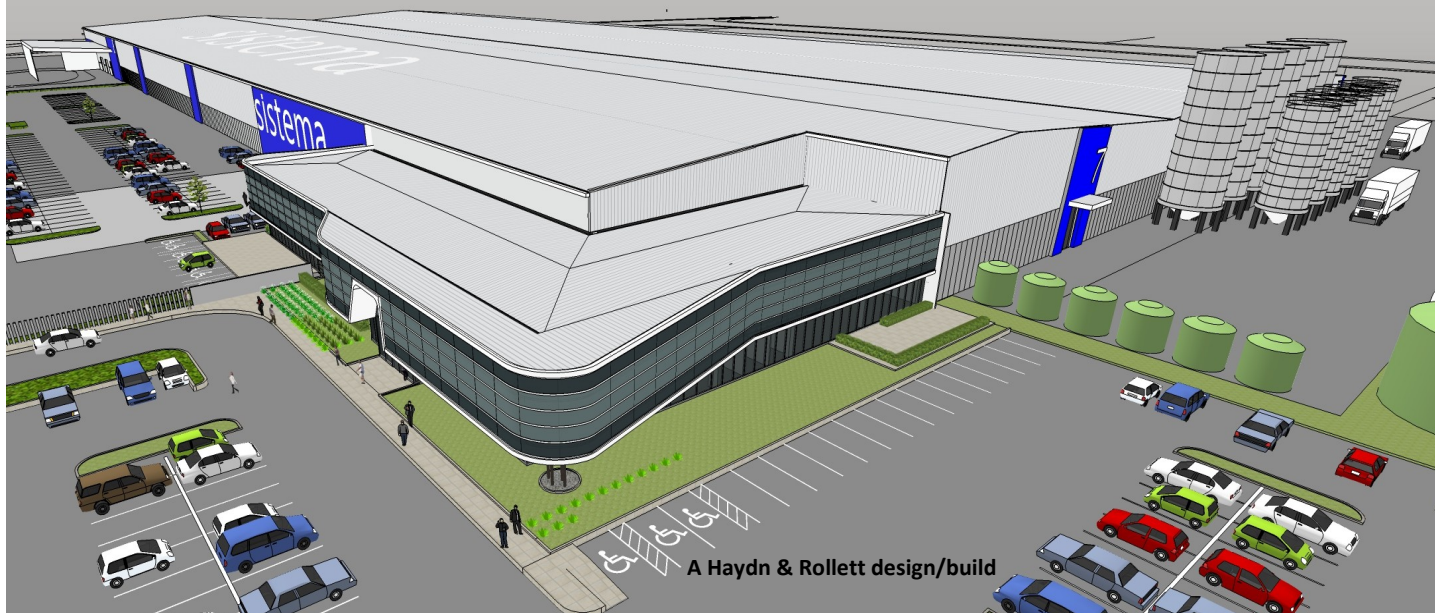

**STEEL CONSTRUCTION**

# Update . . .

## Sistema stays in NZ with a 51,000m<sup>2</sup> structural steel investment



A Haydn & Rollett design/build

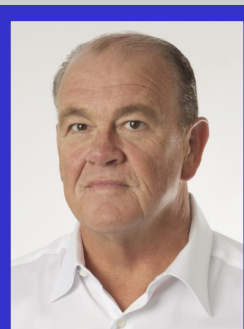
Architect's render provided by Woodhams Meikle Zhan

He started the business 30 years ago in Cambridge making plastic coat hangers; today Brendan Lindsay is proud that he has grown Sistema Plastics into a company whose broad product range meets local and international demand. The time has come for the numerous Sistema factories to be consolidated into one building which will serve warehousing, manufacturing, distribution and also provide two-level office accommodation.

This Haydn & Rollett design/build project is situated on Ihumatao Road, Mangere, and Brendan has good reason to be pleased about his company's growth. "We'll probably double it again in the next five years by continuing to make not just products but product ranges. We've kept this as our mantra for years, designing products that locked, stacked and packed. Our first exports went to Australia, the UK followed, then the USA, and now we supply not only English-speaking markets but also Japan, China—in fact our brochures and videos are in 12 different languages. Now we design products for specific markets. Our latest example is our rice cooker for microwave oven use in Japan."

How can a New Zealand based company compete against other large companies that

are closer to the markets Sistema competes in? "We have surrounded ourselves with people who want to share our dream and live it. We still have some of our original employees working for Sistema. We share the Sistema business DNA. It's very important to get the people to engage by asking them how we can make ourselves stronger, and then trust them to find solutions to our challenges, even designing new robots. We believe that risk must be mitigated by growth. We find new markets and add new products and export them—together with lots of New Zealand air!"



**"My passion is to keep Sistema and its people in New Zealand."**  
Brendan Lindsay

Brendan was delighted with his tour of the D&H Steel Construction plant. "It gave me confidence that D&H had the equipment and skills to deliver close on 2,000 tonnes of fabricated steel to our building programme. The detailing ensured that service reticulation would be incorporated in the structure. Unimpeded floor space means we can change layouts yet maintain production 24/7.

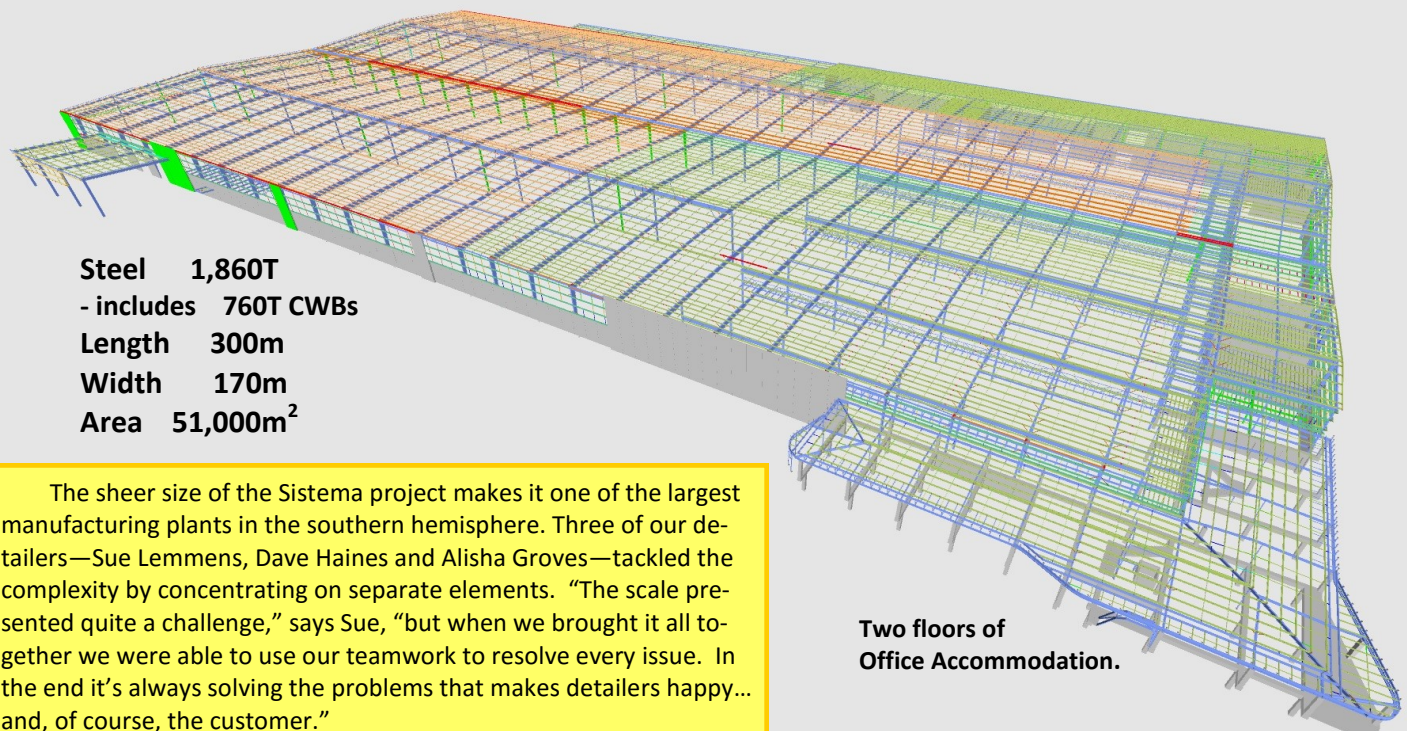
"D&H Steel Construction has been truly invaluable to the success of our project because it's a company that remains Kiwi yet moves forward with the times."

### Key D&H People: 09 839 7250

<b>Wayne Carson</b>	General Manager	Ext 205	<b>Mark McKeown</b>	Estimating	Ext 206	<b>Rob Purchase</b>	W'shop Super	Ext 227
<b>Dean Pouwhare</b>	Operations Manager	Ext 217	<b>Jamie Moxon</b>	Estimating	Ext 215	<b>Kevin Thomas</b>	Procurement	Ext 210
<b>Dave Gulland</b>	Contracts Manager	Ext 222	<b>Colin Ross</b>	Project Manager	Ext 237	<b>Adele Hikuroa</b>	Accounts	Ext 212
<b>Mike Thompson</b>	Detailing Manager	Ext 204	<b>John Frederickson</b>	CWBs & BRBs	Ext 219	<b>Amy Knowles</b>	Doc. Controller	Ext 221



# Sistema's Brendan Lindsay says he's impressed by D&H Steel Construction



**Steel 1,860T**  
 - includes 760T CWBs  
**Length 300m**  
**Width 170m**  
**Area 51,000m<sup>2</sup>**

The sheer size of the Sistema project makes it one of the largest manufacturing plants in the southern hemisphere. Three of our detailers—Sue Lemmens, Dave Haines and Alisha Groves—tackled the complexity by concentrating on separate elements. “The scale presented quite a challenge,” says Sue, “but when we brought it all together we were able to use our teamwork to resolve every issue. In the end it’s always solving the problems that makes detailers happy... and, of course, the customer.”

**Two floors of Office Accommodation.**



**D&H Steel riggers make the most of fine weather on a construction programme that started in October 2015.**



*Left to right: Joel Dalilican, Nanumi Manukei, Steve Arakura, Cameron Walker, Bruce Gemmel, Bobbie Birch, and Eric Birch (Rigging Supervisor).*

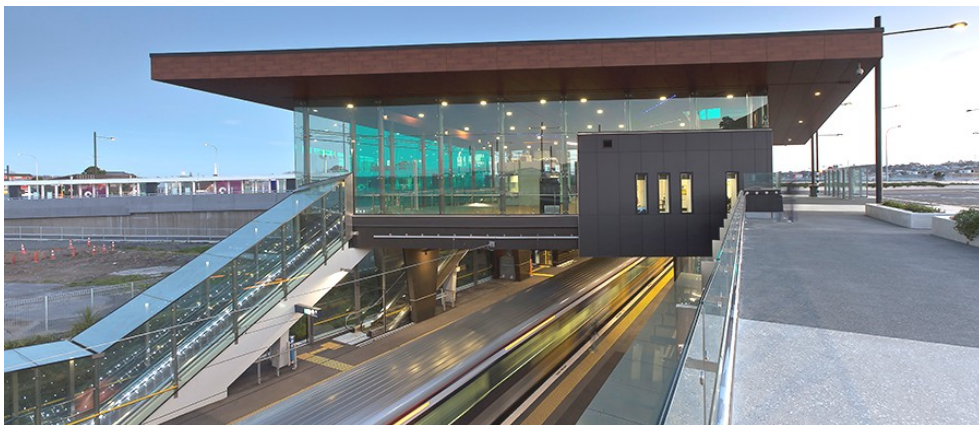
“The work revolves around us,” says Rigging Supervisor, Eric Birch. “It’s a big site and the steel is long, but we welcome the challenge of keeping ahead. Every day’s a learning day, improving efficiency and staying hydrated on the hot days. A good team must keep itself in good shape to stay ahead of schedule.”



**Time-lapse photograph dated 27 February 2016 shows the two floors of offices in the foreground.**



## Success with the AMETI Concourse & Bus Shelter



The new bus and train interchange in Panmure is a significant step towards better transport connections for Auckland's eastern suburbs. Tapered Custom Welded Beams at roof level provide structural depth where it is required to support the floating cantilever roof. Features include a new central pedestrian plaza linking both sides of the rail tracks with two lifts, escalators and four sets of stairs.

For the 2015 Excellence in Steel Construction competition, D&H Steel entered this project in the \$0.5M—\$1.5M category and won a Judges' Merit Award.

### **Caption:**

**At the Gala Dinner and Prize-giving, D&H staff and some other members of the team were congratulated by HERA Executive Dr Wolfgang Scholz (bow-tie). Seated is our CAD and IT Manager, Mike Thompson; standing (from left to right) John Frederickson, D&H Steel Engineer, Dr Scholz, Andy Marchant, Opus Architect, Colin Ross, D&H Steel Project Manager, and Neil Horsfield of Beca. (Missing from the photograph is NZ Strong's Scott Wilsher.)**

## And Christchurch also gets a new bus interchange

This was a successful joint venture between D&H Steel Construction and Christchurch's John Jones Steel, demonstrating how New Zealand's Steel fabricators can pool their resources to meet tight schedules and highly skilled steel fabrication standards. The fact that one company is Auckland based and the other is Christchurch based in no way constrained our ability to combine our strengths. "Our people are highly trained," says D&H Steel's General Manager, Wayne Carson. "We are thoroughly accredited and fiercely competitive, so good results are expected and delivered."





# A Quarter of a Century Growing & Future-proofing AIAL

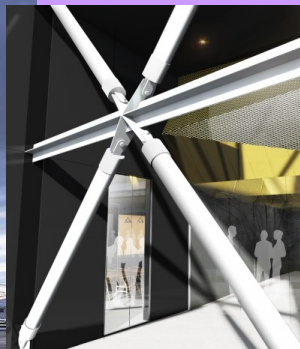
For 25 years, D&H Steel Construction has been engaged in the planned growth of Auckland International Airport. Erecting steel in a busy airport needs the very highest standards of safety for passengers and aircraft, often in decidedly cramped conditions. This update on our latest challenging project is provided by one of Beca's senior engineers, Aaron Beer:

"The purpose of the project was to create two new baggage carousels whilst keeping the passengers flowing 24/7. The top photograph shows the initial stages of erection taking place above the passenger tunnel. Pictured below is a 610mm concrete-filled column to be removed to allow airport ground support vehicles better access at the breezeway. D&H Steel installed two 1500 x 300 Parallel Flange Channels (PFCs) on either side. The load was jacked onto these beams before the column was cut. The remaining upper part of the column was then welded to the PFCs.

"The sequencing required partial completion, propping, diversion of passengers, and the final completion. It was a well executed operation, with Karl Muller leading the D&H Steel team."



The retro-fitting of 32 Oxford Street with Star Seismic BRBs (Buckling-Restrained Braces)



brings the building up to code compliance in terms of its seismic resisting system. D&H Steel Construction is licensed to manufacture the Star Seismic BRBs in New Zealand. The specially designed braces are in demand for both new and existing buildings.

Reclaim has a fleet of more than 30 trucks making regular and on demand collections, handling in excess of 300 tonnes of recyclables daily. It employs 100 people who now have a new plant at 218 Station Rd, Penrose. Federal Construction's Projects Manager, Grant Green, says he had some major challenges because of a late design change necessitated by a council water pipe. "Foundation re-design is always hard work and we needed additional steelwork. D&H Steel did an excellent job both in their factory and with the on-site construction, enabling us to meet our deadline."





## Our Site Managers have complementary skills

Operations Manager Dean Pouwhare (centre) never hands out silly bouquets, but when he says his Site Managers have skills that are complementary, he's pleased as punch. "Kevin Deane (left) and Nick Yakas (right) manage multiple sites differently," says Dean, "according to their backgrounds in building and rigging. Kevin started out in heavy commercial building with Downers in 1975. By 1987 he'd launched his own company. In 2003, D&H Steel let him know we were looking for someone experienced in managing projects.

"Whatever each project needs, his job is to make sure it will be on site, on time, with no delays in the construction programme. If construction stages need to be accelerated, we might provide more labour or increase our workshop processing. Then there are design changes that can be made late in the programme and necessitate prompt on-site corrections. On a daily basis, Kevin is spread over at least five project sites, making sure they have everything they need, so that the follow-on trades can run smoothly."

What does this D&H Steel Construction site manager like to do by way of recreation? Free diving and spear-fishing off Great Barrier Island. Says Kevin: "I'd be there more often if D&H Steel wasn't so busy. But being a site manager is my main passion. Free-diving is just a very special bonus when I have the time."

Nick first worked for D&H Steel 30 years ago before using his rigging skills to travel. In '98 he was in Hong Kong, building a bridge. Two years later he was in Rotterdam building container cranes. He moved to the large English company, Baldwins Crane Hire Ltd, before going on to the Canadian multi-disciplinary management engineering and development consul-

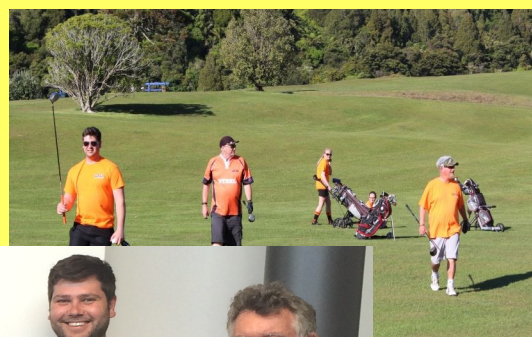


tancy, Hatch.

"He gained experience in heavy lifts, transport and logistics," says Dean, "and took a job in New Caledonia. But I knew it was always his intention to come home to New Zealand. When D&H Steel offered him a position, he was aware that the company has not only embraced modern steel fabrication techniques but has also continuously developed its positive employment philosophy."

So how will Nick deal with tough Project Managers? "I believe we share a commitment to the highest quality," says Nick. "They will be able to see for themselves if I know what I'm doing."

**Yellow Hat Golf** is a fun way for D&H Steel employees to get to know fellow employees who do different kinds of work. So far, two teams of six play Ambrose-style and the winners have their names engraved on the D&H Steel Yellow Hat. Team Tartan won the first match, and Team Fireball (below) won the second.



Left to right: Malcolm Hansen (Accountant), Ron Blok (Detailer), Kelly Gebauer (Production Scheduler), Cobi van Rensburg (Receptionist), John Frederickson (Engineer), JD van Rensburg (Quantity Surveyor), and presenting the Yellow Hat Trophy is Wayne Carson (General Manager).







# Our commitment to apprenticeship training

**'Experience Our Strength'**

- Project Management
- 3-D & Shop Drawings
- Fabrication
- Protective Coatings
- Site Management & Erection



D&H was the first steel constructor in NZ to be awarded this International Quality Accreditation. We comply with ISO 3834 for the benefit of our clients.



We were also the first to acquire Steel Fabricator Certification - a quality management system under the auspices of the IIW (International Institute of Welding).



We manufacture all the commonly specified welded beam & column sections and provide a free design service for optimised, tapered portal frames. Our CWBs are made from G350 steel and welded on both sides.



The leading brand for Buckling-Restrained Braces made in New Zealand by D&H Steel Construction to calibrated & certified seismic ratings.



*Left to right, back row: Rob Purchase, Workshop Supervisor, Moore Rankin, Justin Pateman, Chad Ray and Abhishek Naidu. Front row: Brad Christian, Jin-Seok Kim, Angela Adams, Saskya Buchanan, Mohammed Saheen, Adam Kidson.*

Rob Purchase: "Our apprenticeships are conducted through Competenz and have 6,000 hours' duration, which is about four years. Each apprentice is placed with either a senior welder or a senior fabricator. They are also schooled by our Quality Assurance team, Yakub Kadir and myself. They have assignments that must be completed quarterly as well as an annual block course. Their performances in these combine to give an overall pass for their level 1-4. Every three months their Competenz Student Manager visits them to monitor their progress at work as well as the E-Learning assignments that they do at home.

"We have four new recruits who are undergoing a standard three-month probation: Justin Pateman and Adam Kidson; the other two I'm happy to say are young women, Angela Adams and Saskya Buchanan. They are all making good progress and we look forward to offering them an apprenticeship in heavy fabrication.

"It has to be said that our industry does not have a good record in ongoing training, so I am proud that D&H Steel Construction is driving a healthy apprenticeship training programme. It's working well because we as a company encourage our tradesmen to pass on their knowledge by supporting every apprentice. We don't bond our apprentices to stay with our company, yet many of them do. Mohammed Saheen has been employed

for more than 10 years ; he and Chad Ray are starting their third year in heavy fabrication. Moore Rankin has just started his level 4 Weld Certificate, which Jin-Seok Kim has now completed. He is staying with D&H Steel."

Pictured below, Jin-Seok Kim is presented with his National Welding Certificate by our Operations Manager, Dean Pouwhare. "It's a proud day for Jin-Seok, because he has secured his position in our industry. We appreciate his staying with us; like each and every apprentice, male and female, Jin-Seok was given our full support in training. We congratulate him on his success, and we place high value on all he will add to the experience that has become our strength."

