

Auckland's \$200m Park Hyatt Hotel: D&H's Steelwork



Artist's render provided by Bossley Architects

The seven storey five-star luxury hotel will be located in the Wynyard Quarter and is one of the largest foreign investments in New Zealand tourism infrastructure. The Beijing-based developer, Fu Wah International Group, is dedicating \$2.5m to a new public space and art display in the area around the hotel.

This new Park Hyatt will have a total floor area of 29,000m², 195 rooms, event spaces, a spa and a fitness centre that includes a 25m pool, plus food and beverage outlets. With the signing of the joint venture between Hawkins Group and China Construction, work is already underway.

Hawkins is well acquainted with the Wynyard Quarter, having built the ANZ Viaduct Events Centre, sub-contracting D&H Steel Construction to fabricate and erect the steelwork. China Construction is one of the world's biggest construction businesses with an annual turnover of some US\$100 billion.

The Hawkins Project Manager, Jamie Gibson, says the straight 50:50 Joint Venture with China Construction is a first for New Zealand. "What gives us confidence is the fact that Fu Wah commissioned Beca Ltd to produce guidelines for comparative pricing of offshore fabricated

steel prior to the issue of Tender Documents for the Park Hyatt Hotel. The report is titled **Offshore Steel Procurement Advice** and advises that due diligence requires the contractor to demonstrate that the structural steelwork complies with the New Zealand Building code, as defined by the AS/NZS Standards."

Beca's report has only eight sections, the key one being Section 3: Compliance. It lists a total of 17 issues that the Contractor needs to be aware of when using an offshore fabricator and stipulates for each issue the solutions and actions required to ensure compliance.

"I should add," says Jamie, "that once again Hawkins has subcontracted D&H Steel Construction to deliver the steel that the project requires. Both in the Wynyard Quarter and at Auckland International Airport Limited, Hawkins has found D&H one of the best steel fabricators in New Zealand, indeed probably *the* best, for projects of this scale and quality."

The General Manager of D&H Steel, Wayne Carson, was delighted. "What this means is that the integrity of New Zealand steel construction has earned recognition. Beca's report defines how that integrity is to be maintained. It insists that there must be third party accreditation and test-

ing to ensure all materials meet New Zealand standards.

"D&H is a certified structural steel fabricator under the SFC (Steel Fabricator Certification) scheme. This provides independent, audited quality assurance to ensure that fabrication companies have the systems, the best steel and the specially qualified and trained staff in place to consistently produce compliant fabricated product of the required standard. This is how D&H Steel is competitive when matched against offshore suppliers and measured by the same quality management systems. Given the current market perceptions, we are proud to have been able to demonstrate that locally fabricated steel is the preferred option for this project. I'm also pleased to note that our success generates more than 70,000 direct man-hours for New Zealand workers, plus many more for down-stream suppliers and supporting industries." *Wayne Carson*



Key D&H People: 09 839 7250

Wayne Carson	General Manager	Ext 205	Dave Gulland	Contracts Manager	Ext 222	Mark McKeown	Estimating	Ext 206
Dean Pouwhare	Operations Manager	Ext 217	Colin Ross	Contracts Manager	Ext 237	Jamie Moxon	Estimating	Ext 215
Mike Thompson	Detailing Manager	Ext 204	Richard Hines	Contracts Manager	Ext 225	Kevin Thomas	Procurement	Ext 210
John Frederickson	CWBs & BRBs	Ext 219	Amy Knowles	Document Control	Ext 221	Adele Hikuroa	Accounts	Ext 212

FROM TOP-DOWN TO BOTTOM-UP AT SKYCITY

Everyone knows that SkyCity was to get a level two infill gaming floor, in what would appear to be a relatively small, straightforward project. But any refurbishing of an existing structure can become complicated, as was the case with the SkyCity Atrium. D&H Contracts Manager, Colin Ross, explains: "We had to work in an around areas to which the public had access, so additional safety measures were imperative. Many of the existing steelwork members needed to be strengthened. The photograph below left shows one of the CHS (Circular Hollow Section) columns which has been wrapped around by 500mm diameter split casings, in place and ready for full height, full penetration butt welding.



"The top right photograph is from Phase 2 of the project and shows a fully assembled plant room structure fitted onto the roof. Its pre-installed legs had bolt holes that fitted perfectly with the existing steel roof trusses. The plant room structure was delivered and installed in the small hours to optimise safety. The bottom right photograph shows a generator, and D&H provided more value engineering to ensure that the complex steelwork would adequately support all of the generators and ancillary equipment.

"I think it's fair to say that the main contractors, Fletcher Interiors and Naylor Love, appreciated D&H's willingness to absorb the intensity and ensure that complex phases of the project were completed by their deadlines."



The conversion of Southern Spas to Mason Brothers

Mason Brothers Building is a re-configured heritage warehouse converted to modern space thanks to three large, versatile floor plates. It dates back to the 1920s when it was home to an engineering and ship-building firm.

"New steel supports two new floors," says Dave Gulland, another D&H Steel Contracts Manager. "But the existing steel has been utilised. Because its carbon



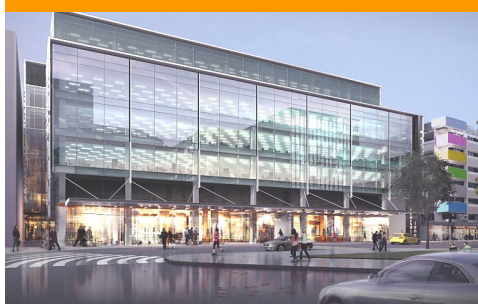
content is low, it's more like wrought iron. Once we'd investigated the composition of the metal, we were able to apply the appropriate welding procedure."

- The floor-plates in area measure
 - Ground—676m²
 - Level 1— 997m²
 - Level 2—1,668m²
- * Ceiling heights up to 8 metres
- * Full height floor to ceiling glazing

The upgrade, designed by Warren & Mahoney, included exposing the original bricks on one façade. Visitors to the Wynyard Quarter will find that 139 Pakenham Street is delighted with its contemporary look.



In a successful joint venture D&H Steel Construction and John Jones Steel complete Grand Central . . . Crossing Carpark . . . Bus Interchange . . .





Our People: Our Best Assets

'Experience Our Strength'

- Project Management
- 3-D & Shop Drawings
- Fabrication
- Protective Coatings
- Site Management & Erection



D&H was the first steel constructor in NZ to be awarded this International Quality Accreditation. We comply with ISO 3834 for the benefit of our clients.



We were also the first to acquire Steel Fabricator Certification - a quality management system under the auspices of the IIW (International Institute of Welding).



We manufacture all the commonly specified welded beam & column sections and provide a free design service for optimised, tapered portal frames. Our CWBs are made from G350 steel and welded on both sides.



The leading brand for Buckling-Restrained Braces made in New Zealand by D&H Steel Construction to calibrated & certified seismic ratings.



Our new Contracts Manager, Richard Hine,

was born in Wellington, grew up in Nelson and took his BEng (Hons) at the University of Canterbury. After four years as a Consultant Engineer, Richard gained experience in the U.K. with Atkins, a large international consultancy, before moving to the Middle East.

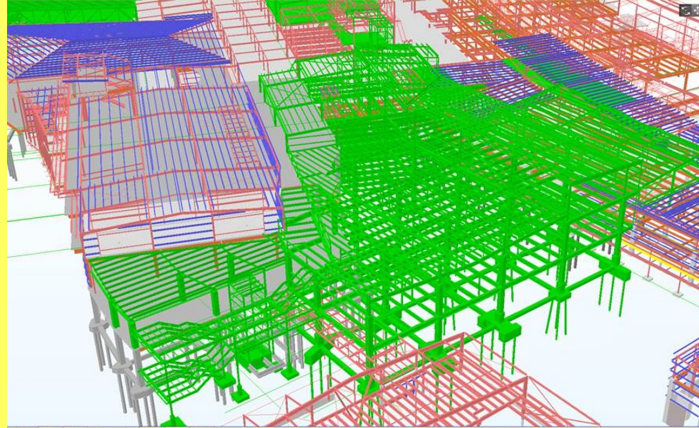
"I worked for Leighton Contracting in Dubai on a number of large-scale projects. More recently I moved to Hong Kong to work for Alfasi Construction on one major project: a terminus for the high-speed Chinese rail service. By this time I was married to Florence, who's French and, like me, loves to travel. We were both delighted when D&H got in touch and made me an offer that meant I could bring my engineering experience home.



Richard and Florence in Peru on a five-day trek to Santa Cruz.

"It's great being able to resume diving in New Zealand, as well as water-skiing and fishing. When I'm out distance running, I have time to think about D&H Steel Construction as a company. It's extremely well organised, as anyone who has visited our plant in Henderson will know. Our production line is superb, but even more important is the team spirit. Currently, I'm absorbed in the ongoing development of Auckland International Airport where we have some 30 packages and nearly all of them critical and difficult to build, I must say I'm impressed by the capability of the D&H site crews. Every Contracts Manager depends on the competence of his site crews, and these men are outstanding."

In the drawing below, the steel structure shown in green is a 3-storey building that has a Truck Dock on ground level with Bulk Scanning and Baggage Handling; level 1 has an Emigration Processor, Decompression & Retail; level 2 has Plant and Offices and level 3 has a Plant Deck & Roof—just one of the projects for future AIAL growth.



Richard Hine, Contracts Manager

Cobi and JD (Jan Daniel) van Rensburg love the month of August

They arrived in New Zealand on 8 August 2015 having promised each other that whoever was first to be offered a job, their better half would get into line to make sure they'd become permanent residents. In South Africa Cobi had been an accountant while JD was the equivalent of a Quantity Surveyor in the mining industry.



Being treated like that has given me a great sense of loyalty."

In fact, D&H went further and offered Cobi a position as receptionist. "I thoroughly enjoyed this role, because it was fun for a change not having all the deadlines I used to have as an accountant. I also did the time-sheets, which kept my head engaged with numbers."



"We'd done all our paperwork in advance," says JD, who was quickly employed by D&H Steel. "I have to say that D&H was friendly and supportive, and our General Manager, Wayne Carson, gave me time to get my visa approved and settle in as a member of the company family.

These two became three in August. Cobi says their son, Daniel, is probably going to be good with numbers, too. "His birthday was 4.8.16, so he'll soon know that 4 doubled is 8 and 4 squared is 16!"