

CONNECTIONS



D&H STEEL PEOPLE + PROJECTS

+ PERFORMANCE



IN THIS ISSUE

SCNZ INDUSTRY AWARDS

STEEL INJECTS PERSONALITY AT THE LANDING

D&H STEEL: GOVERNMENT ENGAGEMENT A PRIORITY

PROCUREMENT SMARTS FOR NEW SUDIMA

FIRST CHRISTMAS FOR NEWMARKET MEGA-MALL

FOODSTUFFS' MAMMOTH LIFT – THE TALE OF 16 CRANES

D&H STEEL TALENT ACKNOWLEDGED AT INDUSTRY AWARDS

D&H Steel is honoured to have been recognised at the annual SCNZ Excellence in Steel Awards, taking home three awards across multiple categories.

D&H Steel received the 2019 SCNZ Supreme Award for Excellence in Steel Construction for the successful execution of the Auckland International Airport Departures Terminal redevelopment. The transformational \$200M project has almost doubled the size of the international departure processing zone, reconfigured the landside farewell area, introduced an expanded security screening and processing area, plus a new passenger lounge and duty-free shopping hub have

been developed. Contract Manager Richard Hines accepted the award, a proud moment for a fantastic achievement.

Estimator Jamie Moxon was awarded the inaugural Young Achiever of the Year award, an accolade which has since inspired him to move up the ranks at D&H Steel and pursue a management role. Jamie is passionate about imparting his knowledge and work experience to others. D&H Steel General Manager and Director Wayne Carson says the combination of Jamie's attitude and aptitude has seen him grow from humble beginnings to a highly valued member of the senior team

Continued inside



D&H Steel wins 2019 SCNZ Supreme Award for Excellence in Steel Construction for its work on the AIAL International Departures Terminal redevelopment.

Main Image L-R: Wayne Carson – General Manager, D&H Steel, Richard Hines – Contract Manager, D&H Steel, Aaron Beer – Technical Director, Beca

Above: D&H Steel Estimator Jamie Moxon accepts his award for Young Achiever of the Year.



STEEL CONSTRUCTION

Continued from Page 1

in just eight years, paving an admirable career trajectory that exudes leadership potential. "He is an inspiration of what can be achieved by someone with no formal training but with a great attitude and willingness to learn."

D&H Steel also took home the Category Winner for projects under \$500,000, for the Emirates Team New Zealand refurbishment at Viaduct Events Centre. Judges commented that this was a unique project, not only because it is for the America's

Cup, but because of the tight timeframe for construction. The project was technically innovative, as the design brief needed to ensure the structure could be reinstated to its original layout, if required.

D&H Steel are very proud to have received these awards.

Right: D&H Steel accepts the award for <\$0.5M Excellence in Steel Construction for Emirates Team New Zealand Base Modifications. Pictured L-R: Darren O'Riley, Manager SCNZ; Wayne Carson, General Manager, D&H Steel; Colin Ross, Contract Manager, D&H Steel; Craig Treloar, GM Auckland, Hawkins Construction



STEEL INJECTS PERSONALITY AT THE LANDING

How do you endow a two-storey office building with sufficient 'personality' to stand out from the dominating force of the warehouse it's attached to?

For 17 Landing Drive, a 10,000sqm, 67m clearspan warehouse and office, Jonathan Walker Architects took inspiration from the world-class landscaping surrounding the site at Auckland Airport's commercial precinct, The Landing.

The structure is a statement piece, worthy of its prominent corner position on the precinct's main avenue.

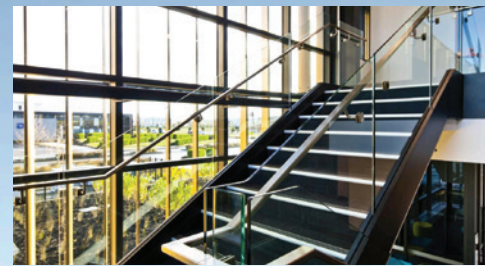
"The bold, sculptural form of the office's façade features a screen, a complex array of steel 'fins', which reflects the patterns and movement of the lush grasses planted throughout the precinct," says architect Jonathan Walker. "The screen design had to work from different angles. As you walk around the building, the screen appears to change shape, it's quite dynamic."

"Steel is easy to customise and we were able to integrate the architectural design features with the supporting structure to create a unique and striking finish," says Walker. "The steel is slim, elegant and crafted, creating a unique look. And its inherent strength meant less of it was needed."

"D&H has amazingly competent technicians. I was really impressed with how they embraced each challenge and worked with us to develop solutions. D&H's use of technology, including 3D software, played an important part in the project's success," says Walker.

Integral to the project's success were D&H crew members Wayne Peachey (Detailer), Shabbir Rajkotwala (QS) and Ina Taikakara (Site Supervisor).

Walker welcomed the opportunity to work with a local structural steel contractor, particularly given the complex nature of the steel fin plate design. "We had numerous discussions with them, sketched up various configurations to try to understand all the different issues before finalising on a design. This collaborative approach de-risks issues on site and provides confidence in the quality of the steel work."



Slim and elegant steel helps craft a unique look at 17 Landing Drive, Auckland Airport



D&H STEEL: GOVERNMENT ENGAGEMENT A PRIORITY

D&H Steel is passionate about driving the industry forward, for everyone's benefit. With this focus, D&H Steel General Manager Wayne Carson, as part of Steel Construction NZ, continues to engage with MBIE on a range of issues including the Government Procurement Rules, the Construction Sector Accord and compliance.



Left: D&H Steel General Manager Wayne Carson and Workshop Manager Cameron Rogers host a site visit for Hon Phil Twyford.

Above: [L-R] Darren O'Riley – SCNZ Manager, Frank van Schaijik – SCNZ Chairman, Wayne Carson – D&H Steel General Manager, Hon Jenny Salesa – Minister of Building and Construction

So, in November, we were delighted to have two ministers accept our invitation to discuss our industry during a tour of our state-of-the-art fabrication plant in Henderson.

First up was the Hon Phil Twyford. As the MP for our local electorate of Te Atatu, he was particularly interested in D&H Steel as a substantial West Auckland employer with our 250 staff.

"We have a great story to tell about engagement with local community to foster new industry talent, from our Gateway programme, which offers career pathways for local high school students, to our involvement in the Māori and Pasifika Trades Training initiative," says Carson.

Minister Twyford also holds three ministerial portfolios: urban development, transport and economic development. Carson and the Minister spoke at length about the Government's new Procurement Rules, which were launched in late October.

The Rules allow local businesses to demonstrate the benefits they provide to 'NZ Inc', their contribution to cultural, economic, environmental and social outcomes. Carson suggested to the Minister that the Government could boost its impact on business development and the opportunity for New Zealand-based companies by promoting, monitoring and enforcing the Procurement Rules.

Our second visit was from the Hon Jenny Salesa, who leads portfolios including Building and Construction and Ethnic Communities, and is the Associate Minister of Education.

As with Minister Twyford, Minister Salesa was impressed with our commitment to the local community and ensuring the future skills of our industry through training initiatives. Minister Salesa has a particular interest in the Government Procurement Rules and she sees them as a pathway for improved fair play and balancing of risks.

"We were pleased to hear her say that she wants to ensure every government department leads by example and follows the new Rules to provide a more robust industry sector to benefit 'NZ Inc'," says Carson.

"In addition to the Rules, we discussed our frustration at subcontractors' lack of 'voice' in the Construction Sector Accord, which is dominated by the main contractors, who typically project manage the work and are more reliant on the subcontractor experience than ever before. We maintained our position that the subcontractor market is highly skilled and is responsible for doing the work. It makes sense that we should try and contribute the subcontractors' experiences to the Accord," says Carson.

Minister Salesa listened to our concerns and encouraged us to sign up to the Accord and nominate representatives from the subcontractor sector.

Following both meetings, Carson is hopeful about next steps.

"Each minister was knowledgeable and engaged in the issues. Since then, we have also had another session with MBIE to discuss compliance and the Procurement Rules, and how best to measure and monitor them."

PROCUREMENT SMARTS FOR NEW SUDIMA

One of Auckland's newest CBD hotels under construction has reaped the benefits of the excellent contractor collaboration D&H Steel is known for. Sudima Auckland CBD will be a four-and-a-half-star hotel located on the corner of Nelson and Wellesley streets when it opens in early 2021, with steel construction managed by D&H.

The project's structural engineer lead, Grant Coombes from Engenium, says the focus of the design from the get-go was that the gravity structural steel frame would be braced temporarily, so that the lateral concrete structure wouldn't require propping.

"This meant the building would ultimately be self-supporting through each stage of being erected; there was no need for any external scaffolding," says Coombes.

Engenium's idea to approach the propping requirements in this way, along with the excellent input from each subcontractor, "shaved months" off procurement.

"It's a different procurement model, which resulted in optimising and integrating

each party's contribution to maximise the benefits for the project. Often you can't achieve that, as you can't always guarantee having the client at the table at every critical stage, but our client trusted us and D&H in this regard."

The hotel's construction manager Bruce Holdsworth says 'designing to be built' is an efficient approach, enabling less involvement on site and a large amount of work completed off site for optimal efficiency.

"It was another job well done on D&H's part – I got what I expected having had a relationship with Wayne Carson for 30-odd years."

Coombes also commends D&H Steel's innovation when helping to design an external stairway – a structural type that has become somewhat of a D&H speciality. Also he says D&H was hugely supportive in its lotting and phasing advice, to ensure optimal stability as the building was erected – again, something difficult to achieve without having the contractor on board and understanding the design ambition.

D&H Steel Operations Manager Dean Pouwhare says "incorporation of the temporary works into the steel shop drawing and design development process resulted in an efficient site installation."



Sudima Hotel Auckland CBD opens in 2021

COST-SAVING SOLUTIONS FOR UNIVERSITY

The three-year construction of the University of Auckland's B507 Park West building has wrapped up, and D&H Steel's buildability and value management expertise has been hailed by project management company Precon.

Precon Associate Ian Straka says D&H was an obvious choice to include in the mix of subcontractors best suited to help tackle a tough challenge from tender stage – when the original scope of a 10,000m² build doubled to nearly 20,000m², despite the construction period remaining at three years.

"My experience of D&H was that they offered the best pre-construction advice, and had a robust and transparent pricing model, so I knew they'd be able



to help us figure out the best way to approach this bigger job," says Straka.

"We had many meetings with Wayne Carson who came to us with an open-book pricing policy that has paid dividends for the project overall. For example, D&H Steel crunched some numbers on the proposed use of steel stiffeners, and Wayne's proposed idea enabled us to reduce welding requirements and shave more than \$100,000 off the project."

"There was a lot of model sharing between D&H, Beca and the façade provider. So by the time we engaged



D&H for the steel erection stage, they'd already had six months of design and modelling input, which really helped."

The Park West Development includes a basement car park and facilities for teaching, clinic and academic programmes.

Key design drivers included the adoption of two repeating elements (repetition of grid modules to assist programme), with a unique central linking element or hinge providing access, connectivity and community. The building consists of five occupied levels with a single basement level providing car parking.

FIRST CHRISTMAS FOR NEWMARKET MEGA-MALL

The \$790 million Westfield Newmarket redevelopment opened its doors for its first Christmas shopping rush late last year – much to the delight of thousands of customers keen to visit the newest retail hot spot.

The world-class retail and lifestyle destination is home to 230 specialty stores, with a luxury precinct housing more than 20 luxury and international brands opening throughout 2020.

D&H Steel provided the structural steel services for the 309 Broadway component of the project incorporating three crews of welder fabricators and five crews of steel erectors working on the one-year build at its peak.

Westfield Newmarket is owned by Scentre Group, which is both the main contractor and building owner. Sean Nash, Project Manager with Scentre Group New Zealand Construction said D&H was selected because of the company's reputable experience in steel construction with large-scale builds.

"Where D&H helped in particular was the initial stages of project planning, by helping to streamline the consultation process and ensure steel orders could be delivered on site in time to commence the massive build," says Nash.

The project involved 4,500T of steel, which was one of three large projects D&H were working on at the time.

The building design allowed for D&H Steel to offer Scentre Group considerable cost savings for some of the building's untreated steel, which in a dry, internal environment, wasn't exposed to public view and could remain unpainted.



FOODSTUFFS' MAMMOTH LIFT – THE TALE OF 16 CRANES

At 76,000 square meters, the Foodstuffs North Island Distribution Centre in Mangere is New Zealand's largest industrial building constructed in recent years – so, unsurprisingly, a suitably audacious erection methodology was needed for the steel construction phase.

The huge site didn't deter D&H Steel Operations Manager Dean Pouwhare, who set out developing a bold plan of attack to install 7,000 square meters of roof steel module in a single lift, using 16 cranes.

A simultaneous lift of that scale might seem an incredible approach to some, but to Pouwhare it was business as usual.

"We did it this way because we could – we had the tools and capability and we've been following this methodology for about 15 years, so it's just another step forward in efficiency for us," he says.

It took two and a half weeks to build the roof section on the ground before organising the 16 cranes in position to simultaneously lift the steel – a process which took only six hours.

Pouwhare commends long-serving D&H Steel Site Supervisor Ina Taikakara for helping to lead the massive project, which he says was an exciting job for the crew to be part of, given a usual typical lift only involves between two and four cranes.

The crew celebrated the successful massive-scale lift with a well-deserved barbeque to wrap up the hard work, but this was just one of many roof lifts on this project

Upon completion, the Foodstuffs warehouse based on a greenfield site will house state-of-the-art innovation including unmanned robots to aid goods distribution.

"There was a lot of technical know-how and IP that went on in the background before the lifts could happen; the lift itself was the 'boring' part because everything was spot on by that point."

DEAN POUWHARE
D&H Steel Operations Manager



Below: A massive simultaneous steel 'lift' using 16 cranes at the Foodstuffs North Island Distribution Centre was no mean feat for D&H Steel.



D&H STEEL EVENTS

CHRISTMAS CELEBRATIONS ROUND OUT 2019

The most anticipated event of year is the annual Christmas break up luncheon held on the final work day. Aside from the great food and refreshing beverages it is a fantastic opportunity to mix and mingle with the other 250+ employees and catch up with people who work in different parts of the company.



TOP RIGHT: [L-R] Romika Kumar – Accounts, Karl Muller – Site, Jolyn van Loggerenberg – Reception, Rachel Ibambasi – Welding

MIDDLE RIGHT: [Rear] Peter Lataipangai – Site [Front L-R] Nick Yakas – Site Manager, Heneliko Taimovai – Site, Elmer Esguerra – Site, Jack Tapu – Fabricator

RIGHT: [Clockwise from L] Ramesh Chemutu – Fabricator, Romeo Labramonte – Fabricator, Marco Paguio – Welder, Ray Gomez – Dispatch, Arturo Catahan – Welding, Raquel Sarvida – Fabricator, Ronald Villaran – Fabricator

TOP LEFT: Wayne Carson – General Manager, Wayne Peachey – Detailer, Kevin Deane – Site Manager

ABOVE LEFT: [L-R] Cyril Toleran, Sue Lemmens, Guy Jamison – Detailers

- + Project Management
- + 3D Modelling & Shop Drawings
- + Fabrication
- + Protective Coatings
- + Site Management & Erection

D&H was the first steel constructor in NZ to be awarded this International Quality Accreditation. We comply with ISO 3834 for the benefit of our clients.



ISO 3834 Part 2
Certificate No. 001NZ/2014

We were also the first to acquire Steel Fabricator Certification - a quality management system under the auspices of the IIW (International Institute of Welding).



We manufacture all the commonly specified welded beam and column sections and provide a free design service for optimised, tapered portal frames. Our CWBs are made from G350 steel and welded on both sides.



D&H STEEL STAFF SPOTLIGHT

COAST TO COAST

Once again, a contingent from D&H have competed in the 2020 Coast to Coast. To compete in this race requires commitment and dedication to training and preparation. Pictured are David Haines (Detailer) and Jamie Moxon (Estimator) during a reconnaissance trip down the Waimakiriri River to practice the best lines through the rapids. Everybody successfully completed their race and Mike Sullivan (Managing Director) defended his Vintage category title with a time 2hrs 28mins faster than 2019.



BENJI AWARDED FOR SAFETY

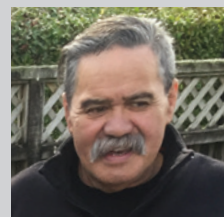
Benji Manaio receives the monthly safety award on the Cordis Hotel construction site from Nick Bagley of Hawkins Construction in recognition of his diligence in preparing the Hot Work Permits required before onsite welding is undertaken.



NEW BABY FOR MARK

Mark McKeown (Estimator), dog Luna and Fernanda Soto enjoy taking one-week old son Andrew on his first stroll in the park.

IN MEMORY OF HUGH BROWN 1954-2019



Hugh Brown was one of the highly respected site crew members first employed by D&H Steel in 1993.

He first came to our attention when he was Bar Manager at the Pioneer Hotel in Henderson. His self-taught skills in rigging and welding, together with his enthusiastic and motivated attitude to get the job done quickly gained respect of everyone around him. He spent years working out at Auckland Airport on the International Terminal upgrade. Many of our current generation of senior site riggers and welders were trained and mentored by Hugh. During the latter years, Hugh was a reliable site supervisor, specialising in finishing off projects through to practical completion and signoff.

Hugh was married to Adie for over 40 years and was a staunch family man with two children and six mokopuna. His son Jordan also joined the D&H Steel team in 2004 and is now a Site Supervisor.

Hugh was an absolute character, always good for a laugh or wind up or "take the piss out" of somebody and will be sadly missed.



WELCOME TO KYLE

Kyle Finch joins the D&H Steel team from the UK as a site supervisor. Kyle is originally from Ireland, however his working career was mainly on big construction sites in London.

After hours, he is into car restorations and fishing and enjoys rugby, so hopefully should feel quickly at home in New Zealand.

Phone one of our team today on 09 839 7250. We'd love to hear from you.

Wayne Carson – Ext 205
Director/General Manager

Dean Pouwhare – Ext 217
Operations Manager

Mike Thompson – Ext 204
Detailing Manager

John Frederickson – Ext 219
CWB Manager

Richard Hine – Ext 211
Contract Manager

Colin Ross – Ext 237
Contract Manager

Document Controller – Ext 225

Mark McKeown – Ext 206
Estimating

Jamie Moxon – Ext 215
Estimating

Justine Purchase – Ext 210
Procurement Manager

Adele Hikuroa – Ext 212
Accounts